

OVER 50 YEARS Of Complete Solutions For Constructions

Strategy, Mission and Company's Values

Sustainability

Range of Products

elpreco

Perfect simplu în construcții



WORLD WIDE LEADER

Of The Building Material Industry

- Founded in 1970 by the fusion of Cement Limited (1936) and Roadstone Limited (1949)
- Present in 35 countries with over 3400 production facilities and over 76.000 employees
- Active in 3 main areas of the industry:
 - Raw materials (cement, aggregate, asphalt, etc.)
 - Building materials
 - Distribution of building materials



Over 50 Years Of Tradition

The largest manufacturer of concrete precast elements in Oltenia

Our principles are our business card

- Our strategy is to center the MAN, from the employee to our business partners and end customer, throughout our activities.
- Our mission is to offer quality solutions to our clients
- Our permanent concern for our clients made us evolve and be able to respond to current needs
- We are a dynamic, customer orientated company

COMPANY'S VALUES

Our values build our business conduct



INTEGRITY

Everything we do is characterized by honesty and transparency.



HIGH PERFORMANCE

Every day we strive to meet high standards. We value competitiveness as it makes us stronger and it is the way to progress.



LOYALTY

We have divided loyalties: to the company employing us, to our clients and business partners.



ACCOUNTABILITY

We are accountable to the company, shareholders, employees and the environment.



LAW ABIDANCE

Our 50-year experience without breaking the law are a proof that we abide by the law with no exception.



SUSTAINABILITY

We unfailingly invest in projects related to: Social responsibility, Environment Conservation, Health & Safety.



SUSTAINABILITY

The “sustainable development” strategy

- **RESPONSIBILITY TO THE ENVIRONMENT AND CLIMATE CHANGE**

The material that you choose in construction is the key for a sustainable building. Concrete materials offer clear advantages in this respect compared to any other type of construction material. We manufacture environmentally friendly materials in all stages of the product life cycle from raw materials, manufacturing, during the operation of the product to the end-of-life (replacement / reuse).

- **RESPONSIBILITY TO CREATE A SAFE AND HEALTH-PROMOTING WORKPLACE**

Elpreco has created 400 jobs. Work in the company goes under the motto "Safety First". Health and safety at the workplace are supported by ensuring working conditions that comply with the legislation in force, and by the protection equipment to prevent high potentials.

- **RESPONSIBILITY TO THE COMMUNITY**

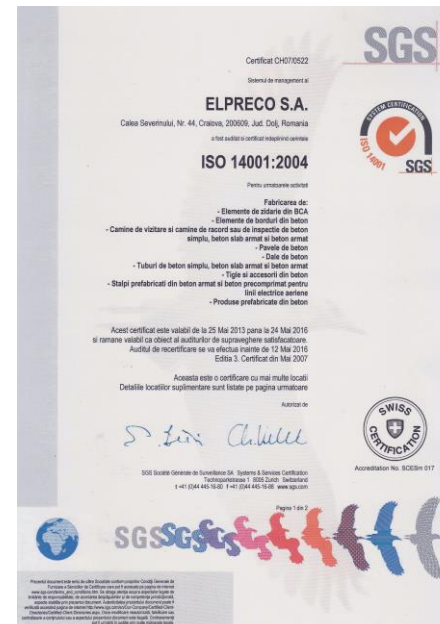
The ultimate goal of sustainability is to secure the future of mankind, which means that, above all, our activities must serve MAN and the community we live in. Elpreco seeks to get involved in projects that meet the real needs of the community and that can lead to better major changes in people's lives.

CERTIFICATES

Our Quality Emblem

All our products are produced according to European Union specifications regarding consumer's health and safety and environment protection and have the **CE** mark.

- AAC
- SR EN 771-4:2011, Part 4
- Concrete Tiles
- SR EN 490:2012
- Paving
- SR EN 1338:2004 and
- SR EN 1339:2004/AC:2006;
- Curbs
- SR EN 1340:2004 /AC:2006;
- Flowerpots
- SR EN 13198:2004



RANGE OF PRODUCTS

AAC Masonry System With Thin Joints



IZOPOR AAC

- Superior thermal insulation
- Temperature conservation
- Reduced heat transfer
- Healthy indoor climate



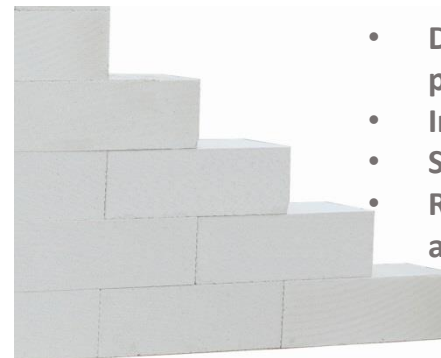
TERMOPOR AAC

- Healthy and comfortable
- Particularly thermal comfort
- Keeps optimal humidity
- High sound insulation factor
- Reduced heating costs



AEROPOR AAC

- Outstanding thermal performance
- Increased mechanical strength
- Excellent soundproofing



STRUCTOPOR AAC

- Durability and structural performance
- Increased mechanical strength
- Superior soundproofing
- Recommended in high seismic risk areas

BCA 
elpreco

RANGE OF PRODUCTS

AAC Masonry System With Thin Joints - Dimensional Range

IZOPOR / TERMOPOR

L	x	l	x	h
65	x	7,5	x	24cm/ 30 cm
65	x	10	x	24cm/ 30 cm
65	x	12,5	x	24cm/ 30 cm
65	x	15	x	24cm/ 30 cm
65	x	25	x	20cm/ 30 cm
65	x	37,5	x	20cm/ 24 cm
65	x	20	x	30 cm
65	x	30	x	24 cm



AEROPOR

L	x	l	x	h
65	x	25	x	30 cm
65	x	30	x	30 cm
65	x	37,5	x	30 cm

STRUCTOPOR

L	x	l	x	h
60	x	25	x	30 cm
60	x	30	x	30 cm
60	x	37,5	x	30 cm

REFERENCE WORKS

- **Block of flats** - A block of flats should provide a comfortable space for a large number of families, both in terms of urban noise insulation and maintenance of an adequate temperature, but it is also very important that the building last. The safety of the inhabitants of a multi-level building is guaranteed by using STRUCTOPOR AAC.

- **Hospital** - A hospital needs sound and thermal insulation as well as to keep a healthy antibacterial environment. AEROPOR AAC ensures an adequate ventilation of the walls, thus using the AAC's ability to absorb and eliminate humidity, avoiding the growth of mold.

RANGE OF PRODUCTS

AAC Masonry System With Thin Joints - BENEFITS



**DURABILITY
AND STRUCTURAL
PERFORMANCE**



**SOUND
ISOLATION**



**OPTIMAL
HUMIDITY**



**ENERGY
EFFICIENCY**



**EASY TO
PROCESS**



**FINANCIAL
EFFICIENCY**



**FIRE
RESISTANT**



**LIGHT
MATERIAL**



**ECO-FRIENDLY
MATERIAL**

BCA 
elpreco



RANGE OF PRODUCTS

Roofing System – Concrete Tiles

SKANDIA



ARCADIA



COLOR RANGE

Standard Surface



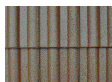
Orange



Red



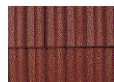
Burgundy



Brown

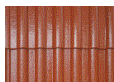


Nature
Brown



Maro Roşcat

Activ Surface



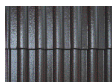
Orange



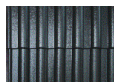
Red



Burgundy



Brown



Anthracite

ȚIGLĂ 
elpreco



RANGE OF PRODUCTS

Roofing System – Concrete Tiles - BENEFITS

ȚIGLĂ 
elpreco



**RESISTANCE TO
EXTREME NATURAL
PHENOMENA**



**FIRE
RESISTANT**



SOUNDPROOF



**ENERGY
EFFICIENCY**



**DURABILITY AND
STRUCTURAL
PERFORMANCE**



**50 YEARS
WARRANTY**



**EASY TO
PROCESS**



**FINANCIAL
EFFICIENCY**



**ECO-FRIENDLY
MATERIAL**

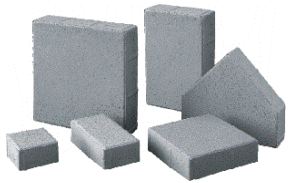


RANGE OF PRODUCTS

Paving System

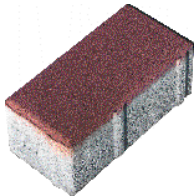
CIVIC

Classic and creative



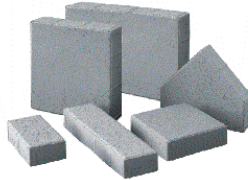
HOLAND

Classic and elegant



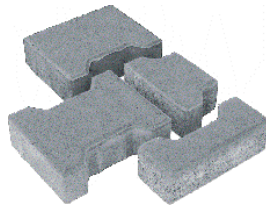
BULEVARD

Space and visual equilibrium



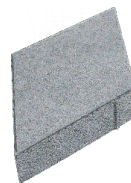
BEHATON

Functionality and simplicity



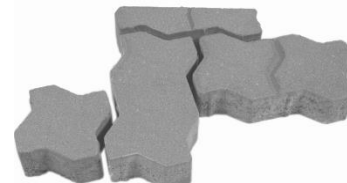
RELIEF

Form and effect



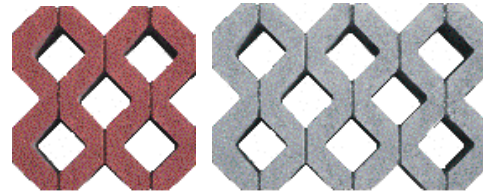
UNI/UNILOC

Classic and functional



EKOPOR

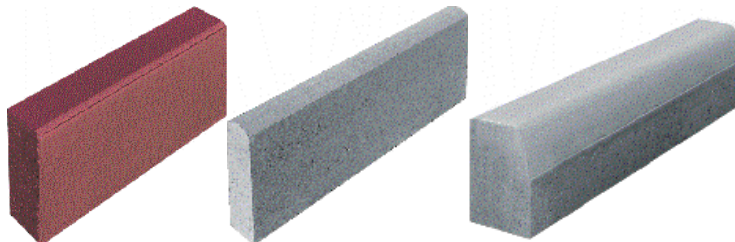
Practical and in harmony with the nature



* Paving available with thickness of: 4 cm, 5 cm, 5 cm, 8 cm, 10 cm, 12 cm

CURBS

Stylish borders for all surfaces



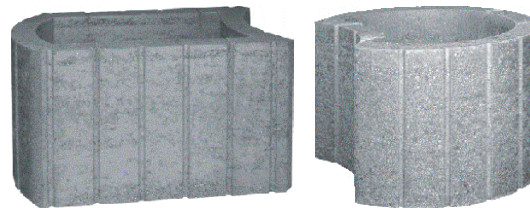
BDZT 1

BDZT 2

BDZT 3

FLOWERPOTS

A garden in which ideas grow



DROP FLOR

RONDO FLOR

PAVELE
elpreco

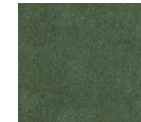
COLORS



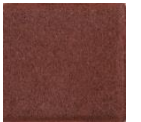
Grey



Yellow



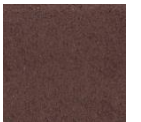
Green



Red

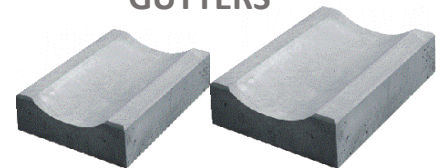


Black



Brown

GUTTERS



Small Gutter

Medium Gutter

RANGE OF PRODUCTS

Paving System – BENEFITS



**WIDE PRODUCT
PORTFOLIO**



**EASY
MODULATION**



**EASY TO
PROCESS**



**DURABILITY AND
STRUCTURAL
PERFORMANCE**



**ANTI SLIPPING/
ANTI SKIDDING**



**FINANCIAL
EFFICIENCY**



**ECO-FRIENDLY
MATERIAL**

PAVELE
elpreco



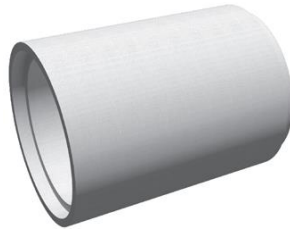
RANGE OF PRODUCTS

Sewerage System

Simple or reinforced
concrete jack pipes



Plug and spout reinforced
concrete pipes



Simple or reinforced
concrete connecting pipes



TUBURI ȘI CĂMINE
elpreco

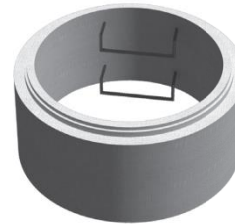
Adjustment ring



Reduction element
Cone Head



Flat stabs



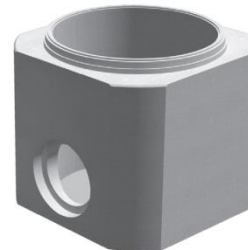
Reduction and covering plate



Round base element



Square base element



RANGE OF PRODUCTS

Sewerage System – Dimensional Range

Simple concrete jack pipes

- nominal diameters 400; 500 mm; nominal length 2300 mm

Reinforced concrete jack pipes

- nominal diameters 300; 400; 500 mm; nominal length 2100 mm
- nominal diameters 300; 400; 500; 600; 800; 1000 mm; nominal length 2300 m
- nominal diameters 1200; 1400 mm; nominal length 2500m

Plug and spout reinforced concrete pipes

- nominal diameters 1600; 1800; 2000 mm; nominal length 2500m

Simple or reinforced concrete connecting pipes

- they are used to connect concrete jack pipes to the base element of the manhole
- nominal diameters 300; 400; 500; 600 mm; total length 1800 mm



REFERENCE WORKS

- **Rehabilitation of tram line** - The rainwater drainage system in the rehabilitation of the Craiova tram line uses Elpreco concrete manholes in order to provide the strength and durability required for heavy traffic exploitation and also to facilitate access to the sewerage system.
- **Road rehabilitation** - Based on a wide range available, manholes adjusted to the needs imposed by the location could be provided. The Craiova-Calafat route is in the process of transformation to Express road, so durability and structural performance are key attributes of the materials used.

RANGE OF PRODUCTS

Sewerage System – BENEFITS



WIDE PRODUCT
PORTFOLIO



DURABILITY AND
STRUCTURAL
PERFORMANCE



WITHSTANDING
HEAVY LOADS



EASY TO
PROCESS



EASY
MODULATION



FLEXIBLE
DESIGN

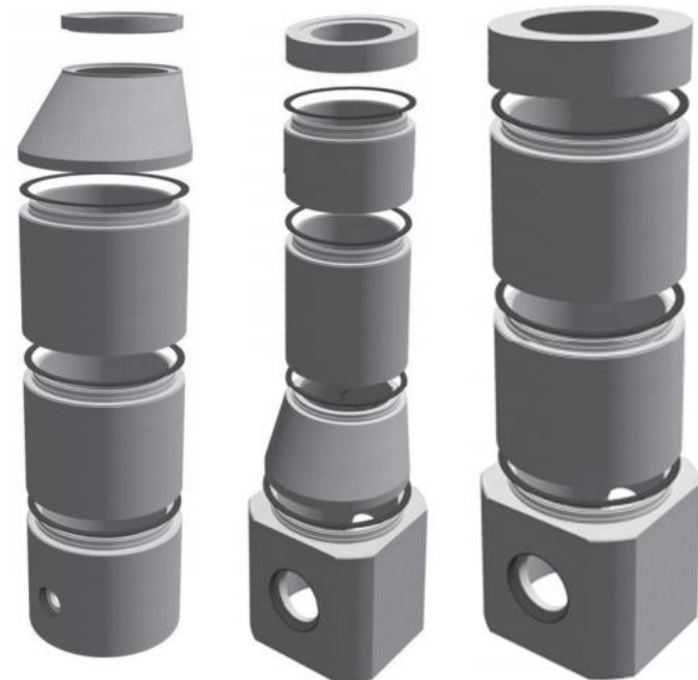


FINANCIAL
EFFICIENCY



ECO-FRIENDLY
MATERIAL

TUBURI ȘI CĂMINE
elpreco



CONTACT

Always at your service



ELPRECO S.A

Calea Severinului, Nr. 44

Craiova - 200609

România

Elpreco Dispatch : (+40) 251 307 700

(+40) 745 119 810

(+40) 726 681 000

Green Line: 0800 800 103

Marketing: (+40) 251 307 763

Dispatch Fax : (+40) 251 590 225

Marketing Fax : (+40) 251 307 777

Sales Fax : (+40) 251 307 780

www.elpreco.ro

www.magazinelpreco.ro

E-mail: office@elpreco.ro

Thank You!